



Olson Mask

Made by: Clayton Skousen & Rose Hedges

Materials Needed



- Cotton Weave Fabric (~1/2 yard is enough to make 2-3 masks)
- All-Purpose Thread
- Hair Ties (2)
- 0.3 micron Filter
- Scissors
- Double-Sided Skin Adhesive

Instructions

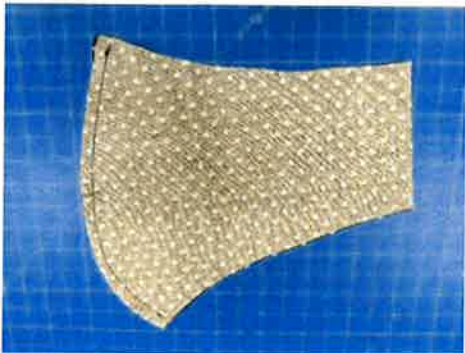
1 Using the patterns, cut one of each shape. You will need six (6) total pieces.



3 Sew *mouth 1* and *mouth 2* together along *side 3*.



2 Sew *face 1* and *face 2* together along *side 3*.

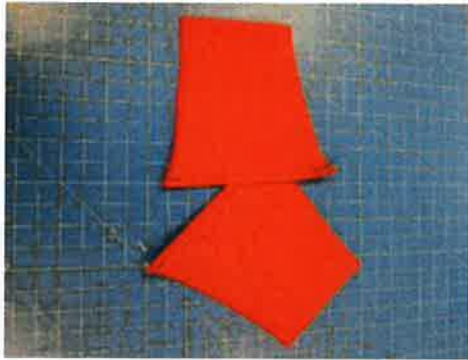


4 On *mouth 1* and *mouth 2* sew fold *side 5* over 1/4 inc and sew down..

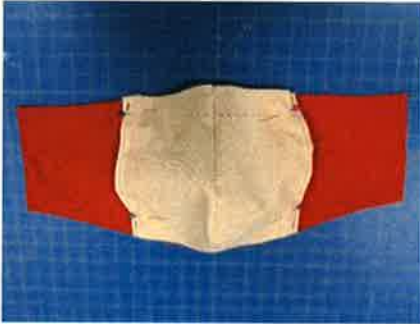


Instructions - continued

- 5 On *cheek 1* and *cheek 2* fold *side 6* over 1/4 inch and sew down.



- 6 Match *cheek 1* and *mouth 1* at the dotted line (7). Sew a 1-inch tack at *side 1* and *side 2* where the two pieces overlap.

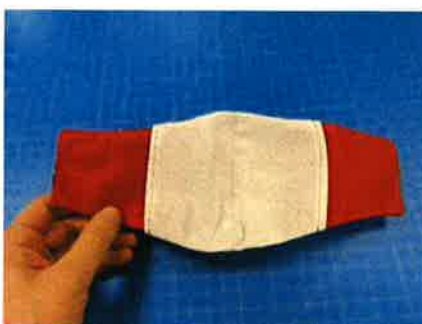


- 7 Repeat Step 6 for *cheek 2* and *mouth 2*.

- 8 With the fronts of the fabric facing each other, sew along the entire perimeter of the mask.



- 9 Use one of the slits between the mouth and the cheek to turn the mask right-side out.

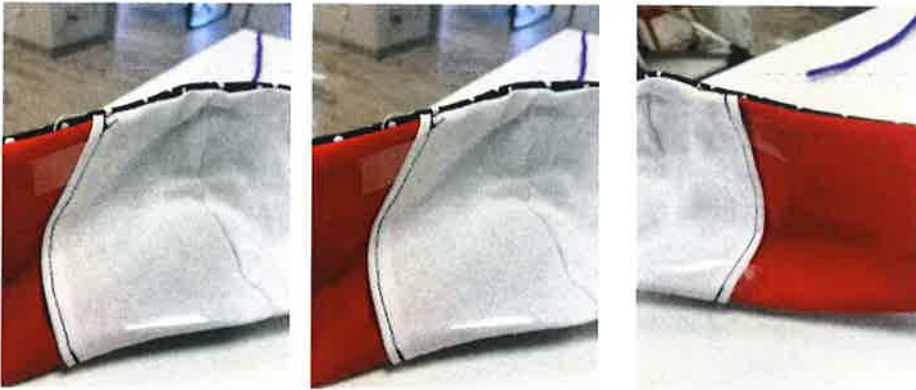


Instructions - continued

- 10 Add a hair tie to each side by folding the fabric on the end of the mask over the tie and sew down.



- 11 Apply double-sided skin tape around the contour of the mask to create the required seal.

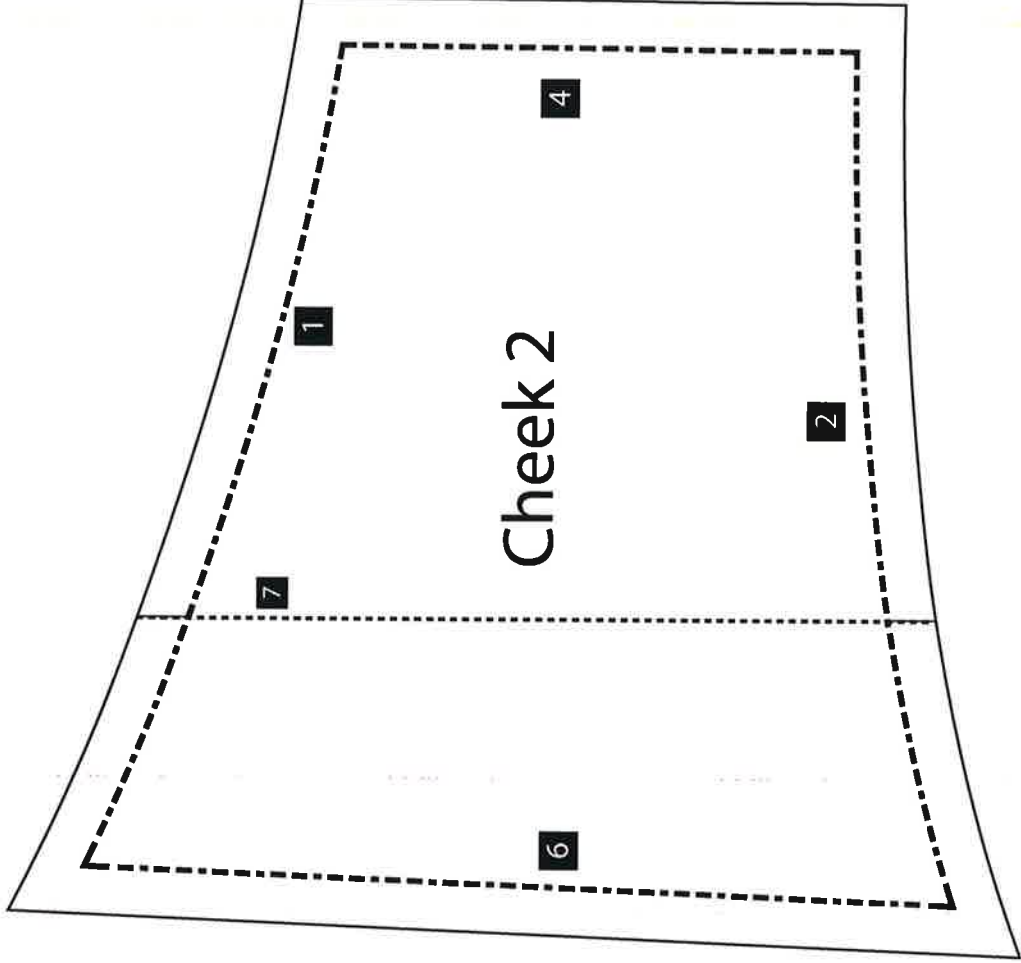
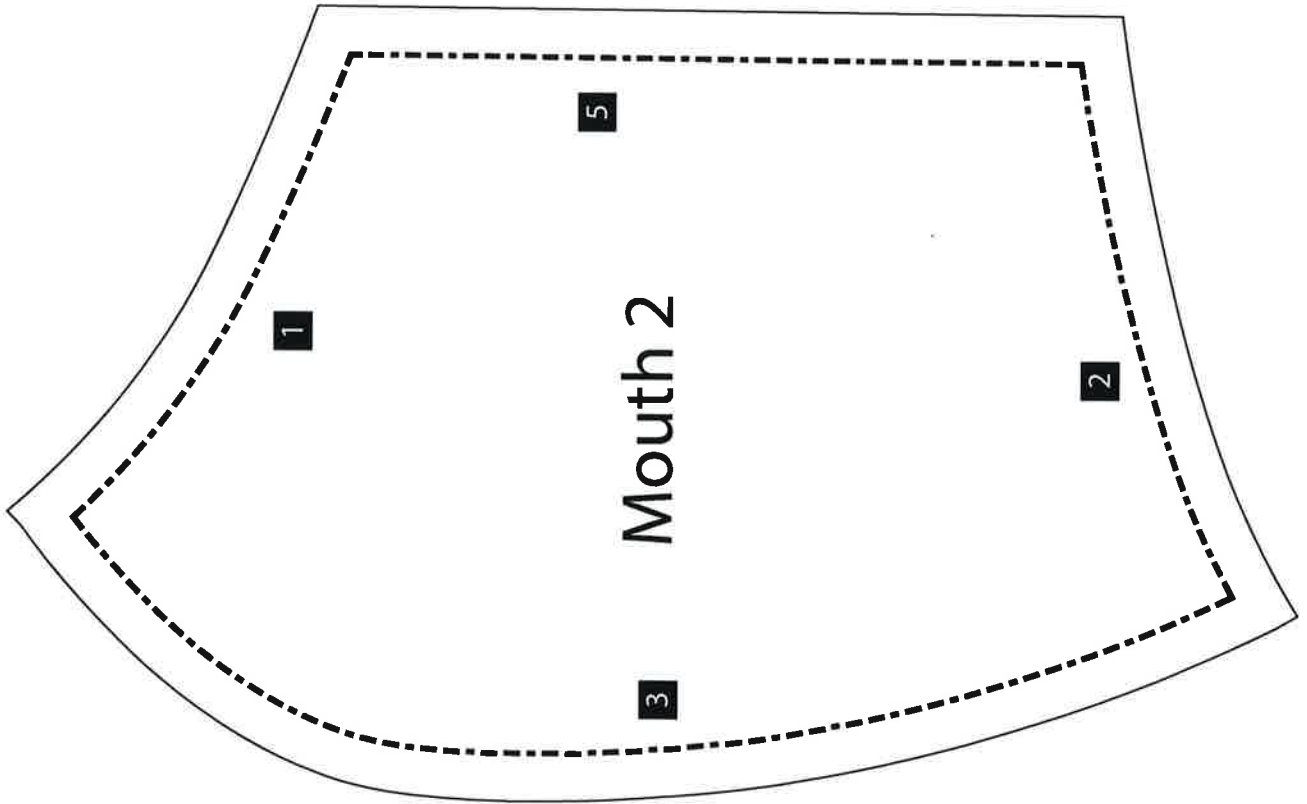


Additional Instructions

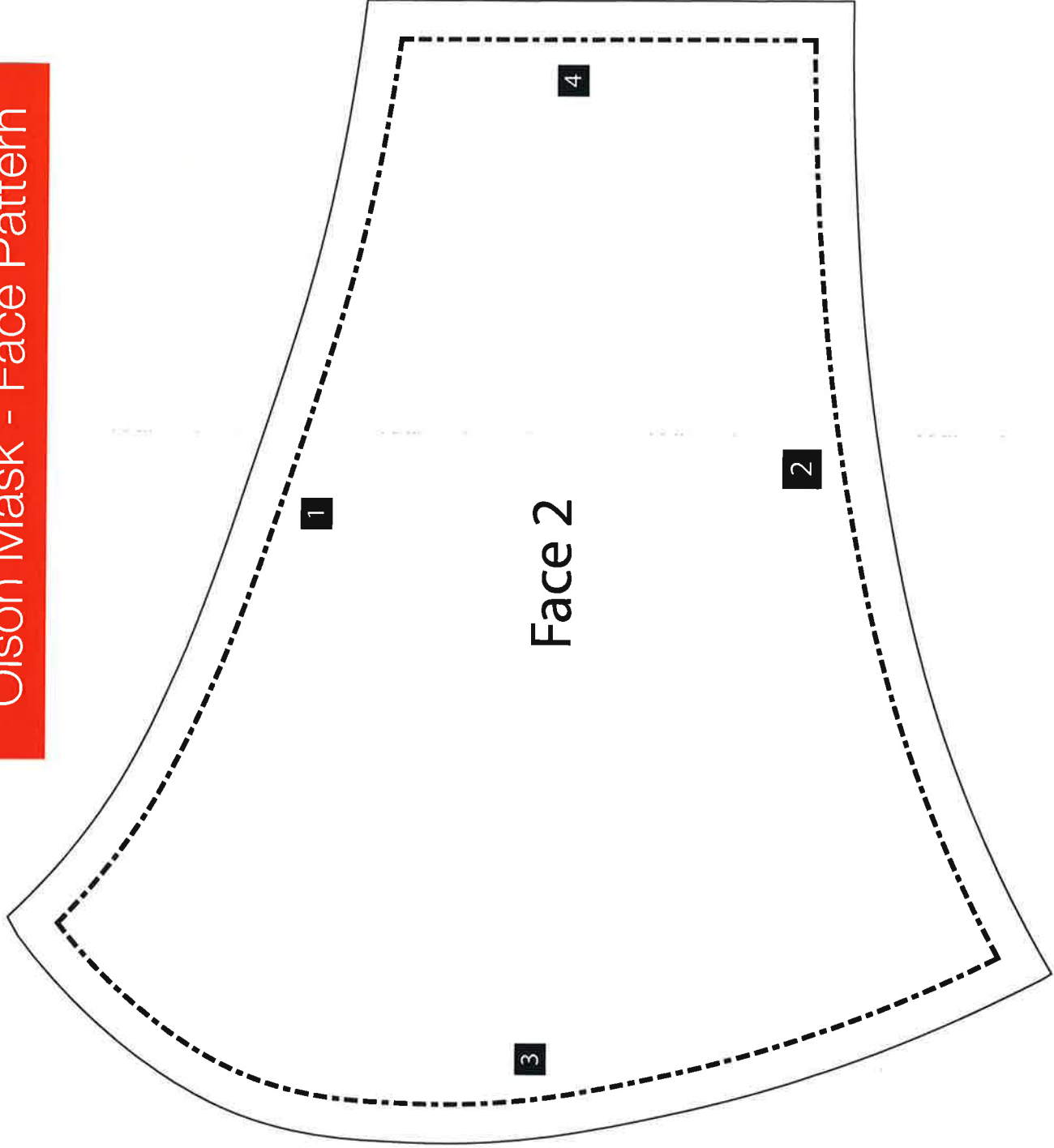
*Elastic will be applied at the hospital, to allow for different sizes to be made.

** for those making for yourself or other hospitals we are using 0.3 micron filters and inserting them in the pocket. We are also using wax coated string at the top for the mask to create bridge, allowing a better seal**

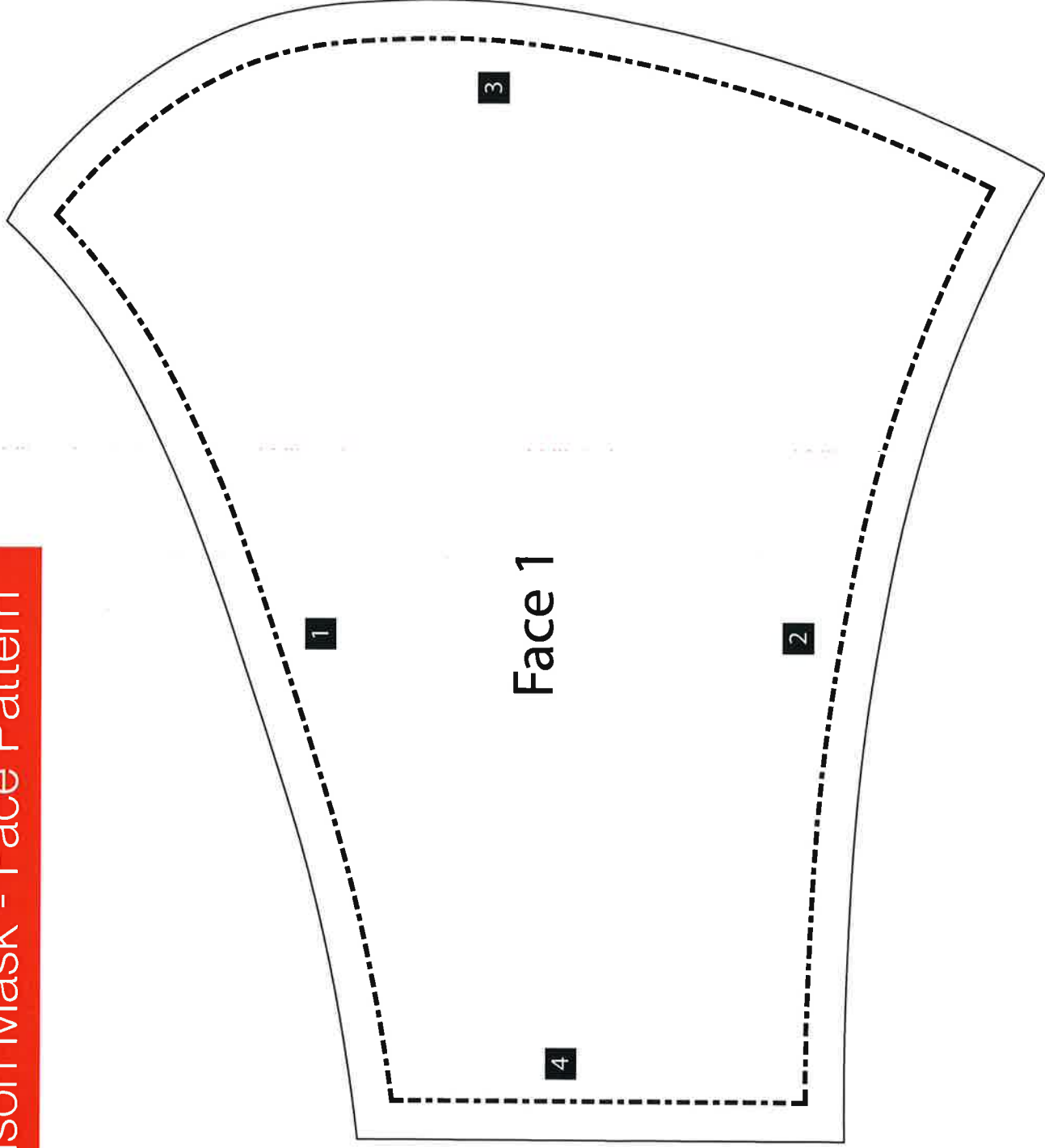
Olson Mask - Mouth & Cheek Pattern



Olson Mask - Face Pattern



Olson Mask - Face Pattern



Olson Mask - Mouth & Cheek Pattern

